

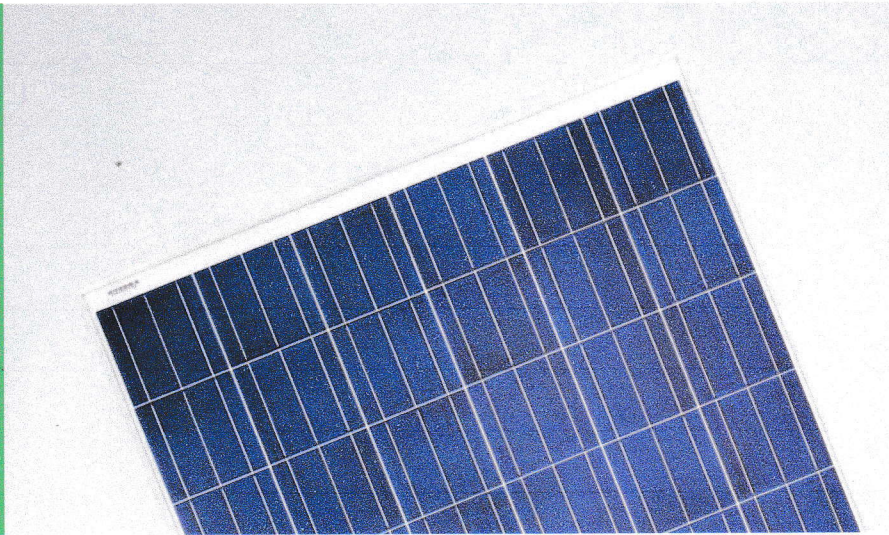
# JKM265P-60

## 245-265 Watt

POLY CRYSTALLINE MODULE

Positive power tolerance of 0/+3%

ISO9001:2008, ISO14001:2004, OHSAS18001 certified factory.  
IEC61215, IEC61730 certified products.



## KEY FEATURES



### High Efficiency:

High module conversion efficiency (up to 16.19%), through innovative manufacturing technology.



### Low-light Performance:

Advanced glass and solar cell surface texturing allow for excellent performance in low-light environments.



### Severe Weather Resilience:

Certified to withstand: wind load (2400 Pascal) and snow load (5400 Pascal).

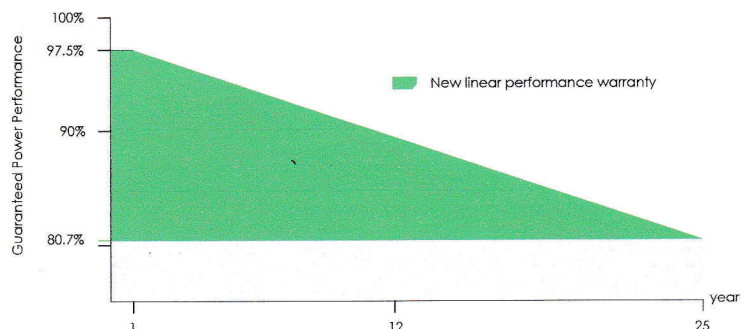


### Durability against extreme environmental conditions:

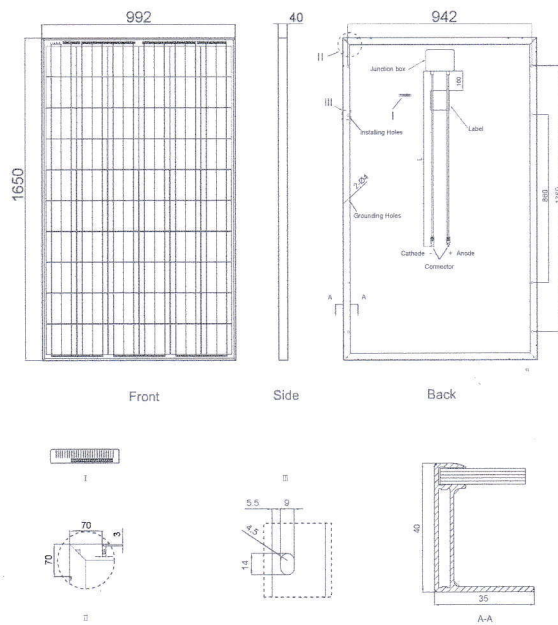
High salt mist and ammonia resistance certified by TUV NORD.

## LINEAR PERFORMANCE WARRANTY

10 Year Product Warranty • 25 Year Linear Power Warranty



## Engineering Drawings

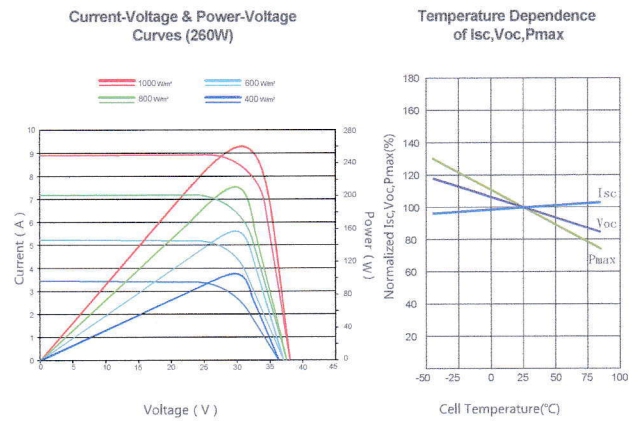


## Packaging Configuration

( Two boxes=One pallet )

25pcs/ box, 50pcs/pallet, 700 pcs/40'HQ Container

## Electrical Performance & Temperature Dependence



## Mechanical Characteristics

Cell Type	Poly-crystalline 156×156mm (6 inch)
No. of cells	60 (6×10)
Dimensions	1650×992×40mm (65.00×39.05×1.57 inch)
Weight	19.0 kg (41.9 lbs)
Front Glass	3.2mm, High Transmission, Low Iron, Tempered Glass
Frame	Anodized Aluminium Alloy
Junction Box	IP67 Rated
Output Cables	TÜV 1×4.0mm <sup>2</sup> , Length:900mm

## SPECIFICATIONS

Module Type	JKM245P		JKM250P		JKM255P		JKM260P		JKM265P	
	STC	NOCT	STC	NOCT	STC	NOCT	STC	NOCT	STC	NOCT
Maximum Power (Pmax)	245Wp	181Wp	250Wp	184Wp	255Wp	189Wp	260Wp	193Wp	265Wp	197Wp
Maximum Power Voltage (Vmp)	30.1V	27.8V	30.5V	28.0V	30.8V	28.5V	31.1V	28.7V	31.4V	29.0V
Maximum Power Current (Imp)	8.14A	6.50A	8.20A	6.56A	8.28A	6.63A	8.37A	6.71A	8.44A	6.78A
Open-circuit Voltage (Voc)	37.5V	34.8V	37.7V	34.9V	38.0V	35.2V	38.1V	35.2V	38.6V	35.3V
Short-circuit Current (Isc)	8.76A	7.16A	8.85A	7.21A	8.92A	7.26A	8.98A	7.31A	9.03A	7.36A
Module Efficiency STC (%)	14.97%		15.27%		15.58%		15.89%		16.19%	
Operating Temperature(°C)	-40°C~+85°C									
Maximum system voltage	1000VDC (IEC)									
Maximum series fuse rating	15A									
Power tolerance	0~+3%									
Temperature coefficients of Pmax	-0.41%/°C									
Temperature coefficients of Voc	-0.31%/°C									
Temperature coefficients of Isc	0.06%/°C									
Nominal operating cell temperature (NOCT)	45±2°C									

STC: Irradiance 1000W/m<sup>2</sup> Cell Temperature 25°C AM=1.5

NOCT: Irradiance 800W/m<sup>2</sup> Ambient Temperature 20°C AM=1.5 Wind Speed 1m/s

\* Power measurement tolerance: ± 3%